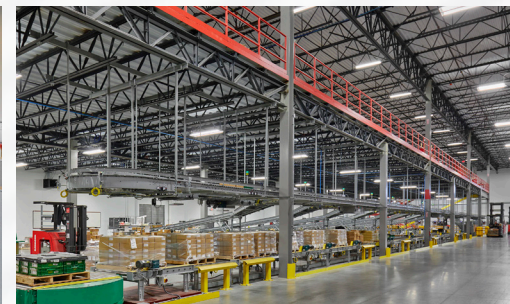
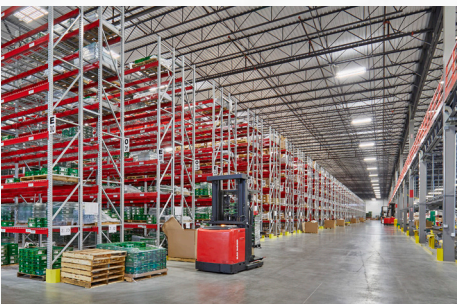


# WÜRTH



216,815 square feet  
Indianapolis, IN



## DEVELOPMENT SCHEDULE

- 13 months

## DEVELOPMENT COSTS

- \$15.5 million

## USE

- Rail-Served Beverage
- Distribution Facility

## SPECIAL FEATURES

- 16,475 SF Office Space
- Storm shelter for 100 people
- Expansion capability